

S/R Ally EA Manual

Hello, traders.

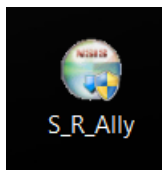
I hope you enjoyed my book about support and resistance levels.

In this tutorial I will tell you in detail how to use S/R Ally advisor.

As I told you earlier, this EA greatly simplifies your work with price levels and makes it simple and intuitive.

Installation

Along with this manual, you received an installer with the EA " S_R Ally ".

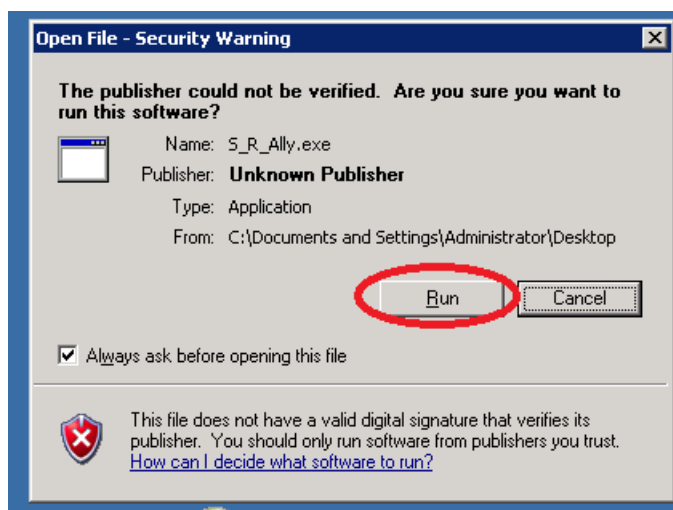


Now you need to install it in your MetaTrader4 terminal. (Make sure your MT4 is closed during the installation). <http://files.metaquotes.net/3592/mt4/quadrafx4setup.exe>

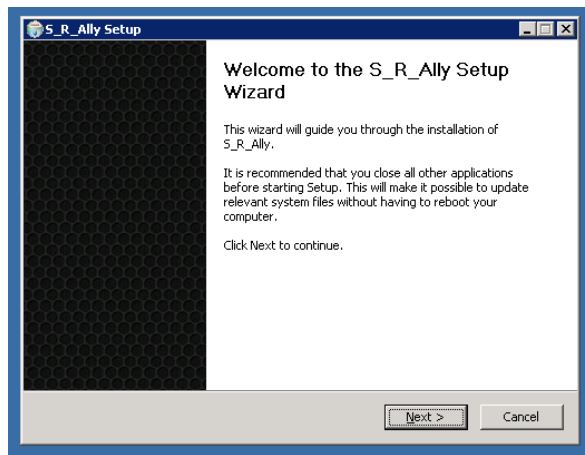
The installation process is very simple and takes just a few minutes.

To start installation, double-click on the S_R_Ally icon, and the installer will start.

If you see any messages from safety systems, such as in the picture below, click Run

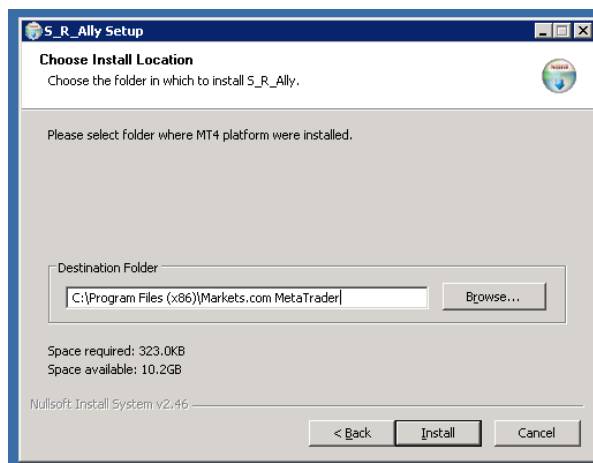


This opens the Welcome screen, where you need to click Next to continue installation

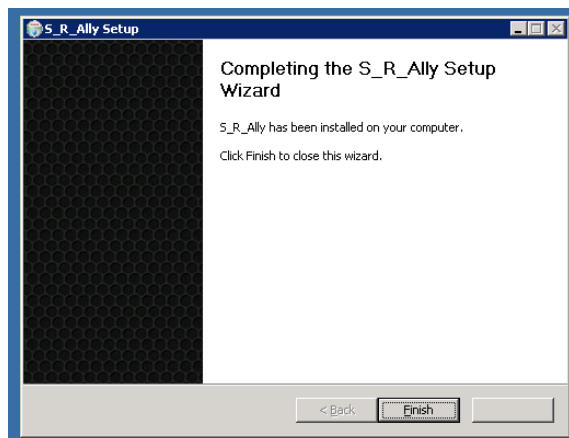


Next you shall specify the root folder that contains your MT4. *(Usually the root folder is located in Program Files (by default)).*

And click Install

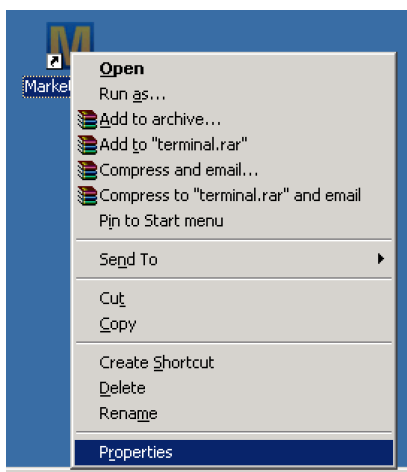


After that, you will be notified that installation is complete. Click Finish and you're done.

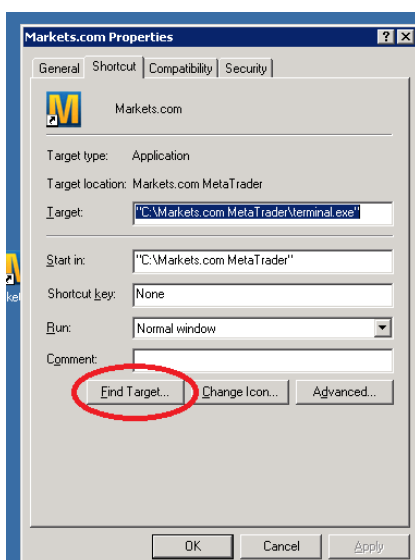


If for any reason you do not remember or cannot find the root folder of your MT4, there is a simple way to do it:

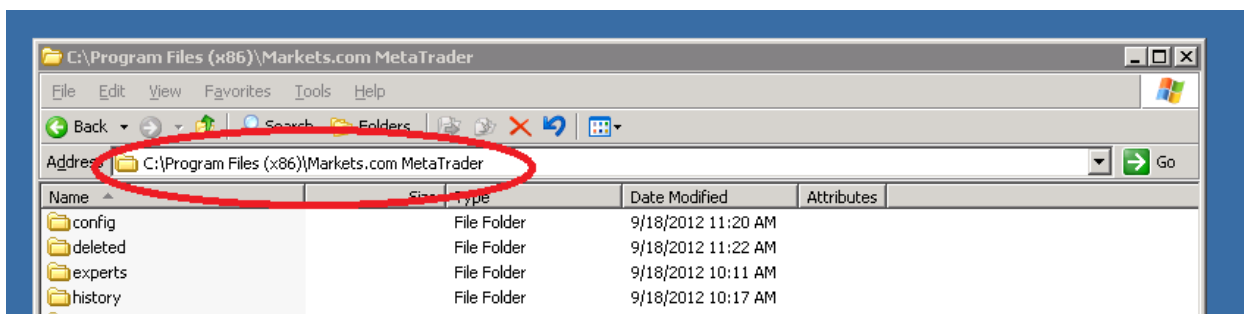
Right click on the MT4 icon and select Properties



Then click "Find Target"



After this, the root folder of the terminal will open in a new window.



Теперь кликните по строке адреса и скопируйте адрес вашего MT4, после чего используйте его, когда инсталлер запросит куда устанавливать советник.

License Key

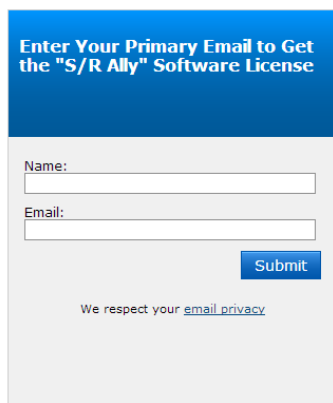
In order to start using S_R Ally, you will need a license key.

It is very simple to get it.

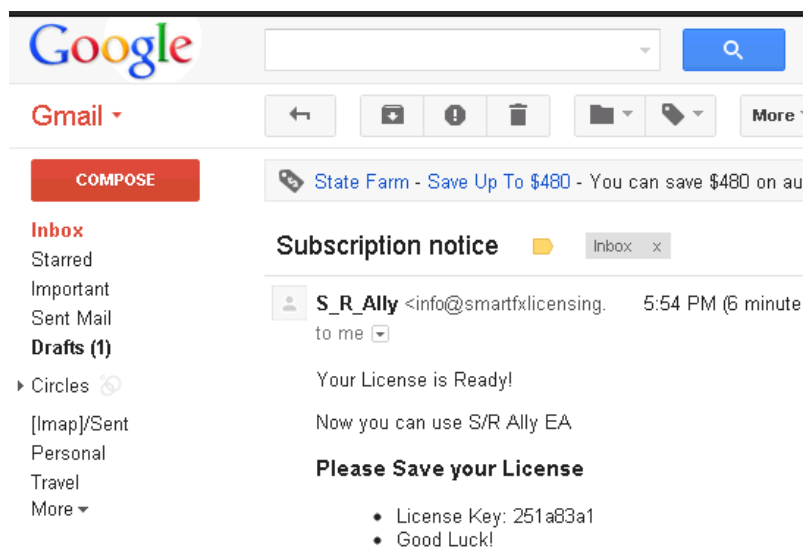
To do this, go to <http://www.smartfxlicensing.com/BCB/>

You will see a form where you need to enter your name (preferably full name) and your email address. And click Submit.

Be careful when you enter your email address and check it for mistakes before you click Submit, as the license key will be sent to your email.

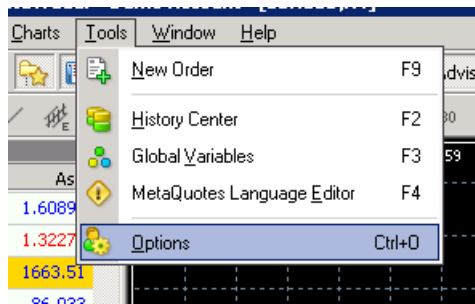
A screenshot of a web form titled "Enter Your Primary Email to Get the 'S/R Ally' Software License". The form has a blue header with the title. Below the header, there are two input fields: "Name:" and "Email:". To the right of the "Email:" field is a blue "Submit" button. At the bottom of the form, there is a small text link: "We respect your [email privacy](#)".

After that, in 5-10 minutes, you will receive an email with your license key for S_R Ally advisor.



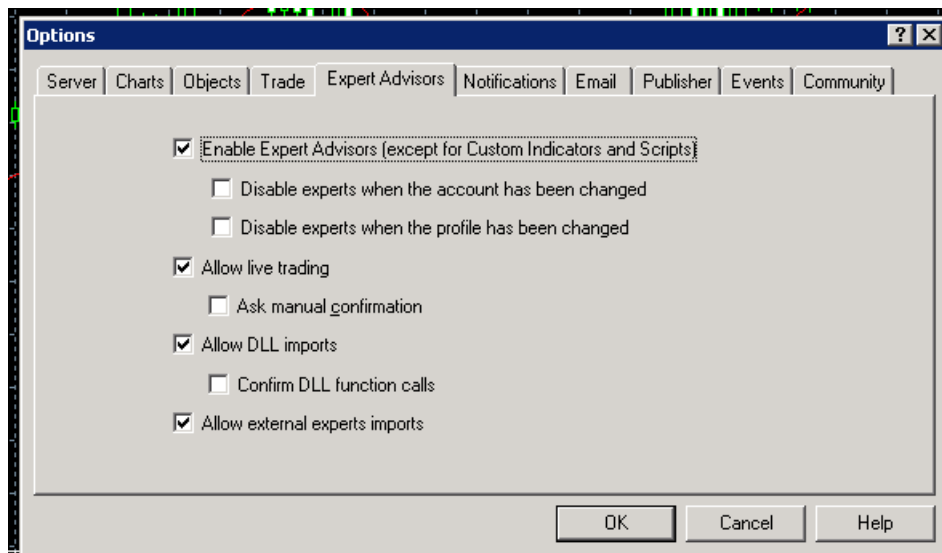
Once you've installed the S_R Ally in your MT4 and got a license key - run the terminal.

Proceed to Tools → Options menu.



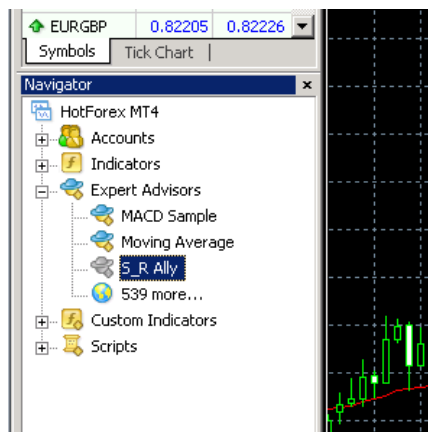
This step is critically important for any Expert Advisors to work on back tests, as well as for saving you from having trouble setting up your EA every time you run it.

All you have to do here is click on the Expert Advisors tab and ensure that the boxes are checked exactly as shown below.



Do not overlook the “Confirm DLL Function Calls” option, which should be unchecked, otherwise the robot will not be able to function properly. You may also wish to uncheck “Disable Experts When The Account Has Been Changed” and “Disable Experts When The Profile Has Been Changed” options, though this is more for convenience rather than a requirement. After you have checked all needed fields, click “OK.”

Having installed the robot, restart your Meta Trader 4 platform and check the Navigator panel on the left-hand side of the Meta Trader 4 window. Clicking the small [+] to the left of “Expert Advisors” will expand that section to display all installed Expert Advisors.



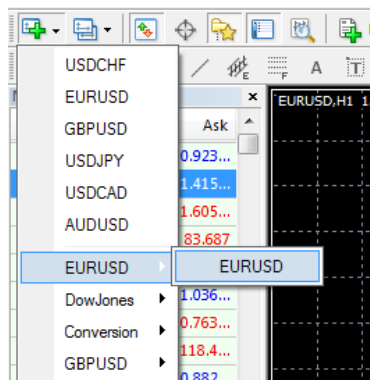
Do not worry that the S_R Ally icon is gray in this list, even though all other icons are colored. This is normal for all commercial Expert Advisors. A colored icon means that you have the “Source Code” for that particular expert.

If you cannot find the S_R Ally icon on this list, it is likely that you have installed the software into an incorrect directory. In that case, we would recommend carefully going through the installation process again. This often happens when you have several Meta Trader 4 platforms installed on your computer. You can check the folders and reinstall the robot into the correct folder or you might have simply forgotten to restart your Meta Trader 4.

After you install all of the software files, and locate the S_R Ally icon on the Navigator panel. You need to open the chart with the feed necessary for your software to trade.

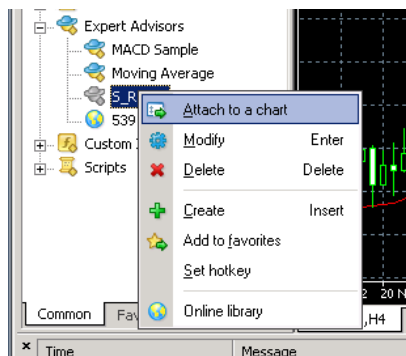
You can use the software on any chart you like.

To open a new chart, simply click on “File” and select “New Chart.” You will then be prompted to select the desired currency pair in the dropdown menu that will instantly appear.



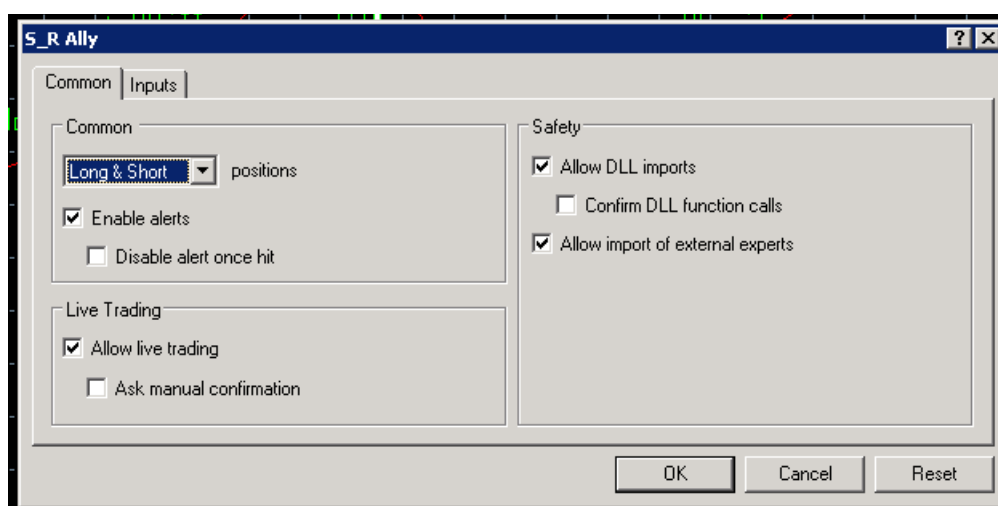
To attach the robot, select the necessary chart and follow the subsequent instructions.

On the Navigator panel, right-click on the S_R Ally icon and select “Attach To A Chart” in the menu as it is shown below.



When you attach the robot to the chart, the “Properties” dialog window will open. The dialog window contains two tabs, “Common” and “Inputs.”

The “Common” tab looks like this.

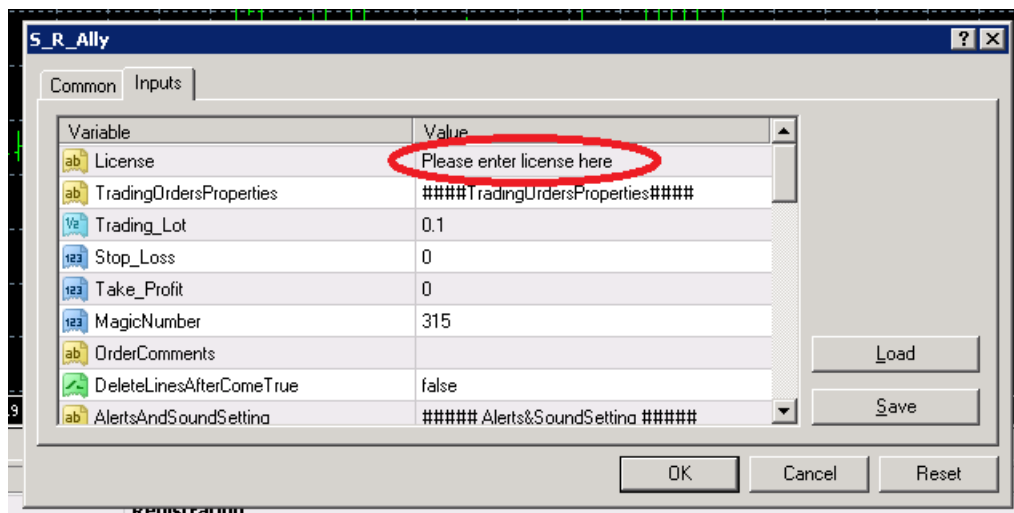


It is crucial that all of the settings are matching the image above or the S_R Ally will not be able to function properly.

Assuming that everything else is correct, the “Inputs” tab looks like this.

"Inputs" tab contains advanced settings for the advisor, which you can change.

Besides, it is the tab, where you will enter your license key. To do this, double click on the box that contains the message "Please enter license here" and enter the key which you have received by email.



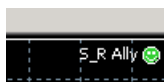
You can find the detailed descriptions of all the settings below, in the **Settings** section.

Important!

This expert works with orders in real time so it was implemented on the cyclical algorithm to track all changes every second.

Therefore it is impossible to open the settings window by usual means. To change the settings, you need to remove the Advisor from the chart and attach it once again. At that, the Lines and the commands for them will be saved, that is, the levels won't be affected.

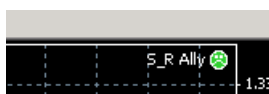
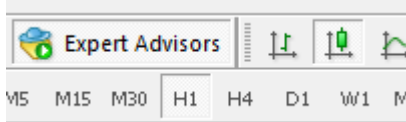
Now the software is ready for work. Depending on how well you have followed our instructions so far, there will be one of three possible things displayed in the top-right corner of the chart to which the robot is attached.



-- A smiley face indicates that the robot is correctly installed and ready to trade.

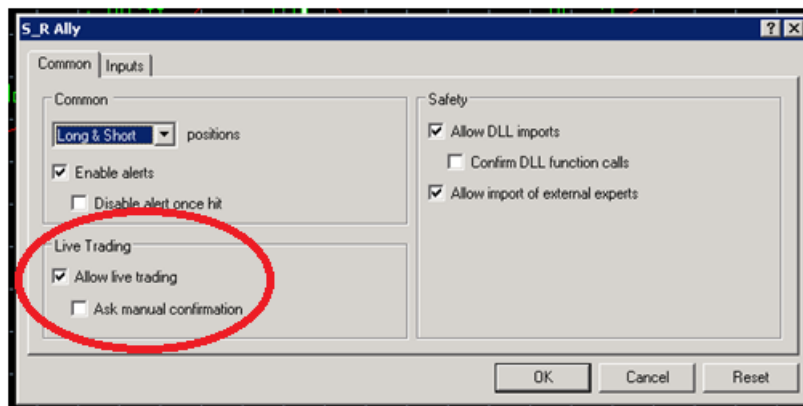


- X means that you forgot to enable the Expert Advisor trading in Meta Trader 4. Make sure that the big Expert Advisors button on the top toolbar of Meta Trader 4 is hit.



-- A sad face indicates that you did not allow live trading.

make sure that the "ALLOW LIVE TRADING" checkbox is checked.

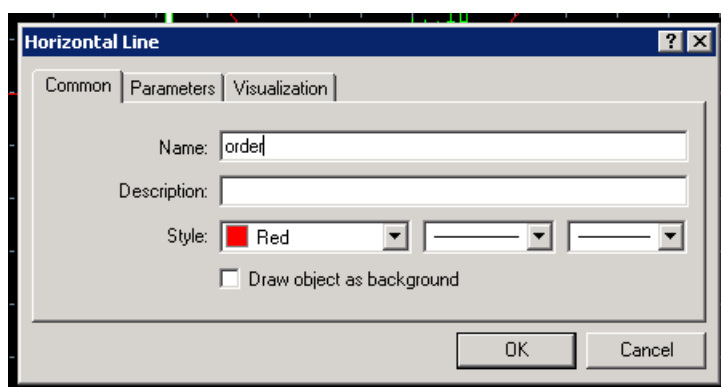
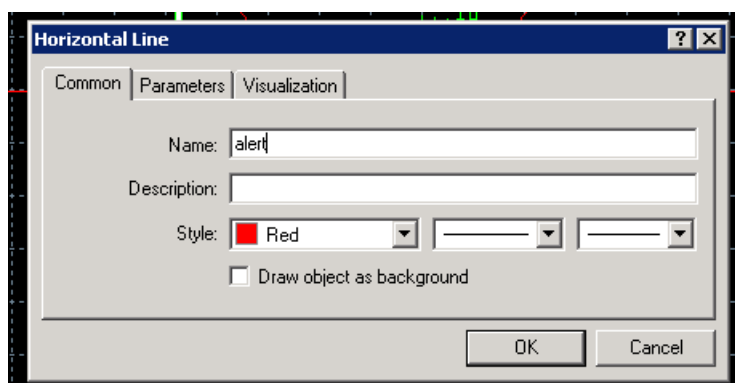


Work of the Advisor

The Advisor works with horizontal lines on the price chart.

You can assign an action "alert" or "order" for each line. Then you will be able to easily deal with your orders by moving these lines on the chart.

First put a horizontal line on the chart. If you want to get just an alert on this line, then go to the line properties (for this double click on the line first to make it active and then right click) and call it "Alert" (in the Name box) in any layout, just mind the spelling. If you need a trading operation, call it "Order" in any layout, too.



And click Ok

If you entered the command correctly, the Advisor will recognize the line and highlight it with Magenta color.



Also the Advisor will rename the line to Alert1 or ORDER1 (up to nine alert and order lines). In the line description (Description box), it pastes a default text command template, and sets an empty command.

Then you shall re-enter the line settings and specify a command for the line.

The Advisor provides a unique graphic style for each command, you can find out more about them below.

For **alerts**, the following options are possible:

Alert if Price crosses the line

Alert if above



Alert if below



Keywords:

above, below in any language layout and any phrase

Alerts if the previous bar closed above/below the line

Alert if previous bar closed above that price



Alert if previous bar closed below that price



Keywords:

Closed above, closed below in any language layout and any phrase

Once you hear the desired number of alerts (**Number_of_Alerts variable**)

With pauses between alerts in the settings size (**Pause_between_Alerts variable in seconds**)

The color of the alert becomes gray (inactive).

For **Orders** the following options are possible:

Once the price has crossed the line:

open Buy



Open Sell



Close Buy



Close Sell



Close All



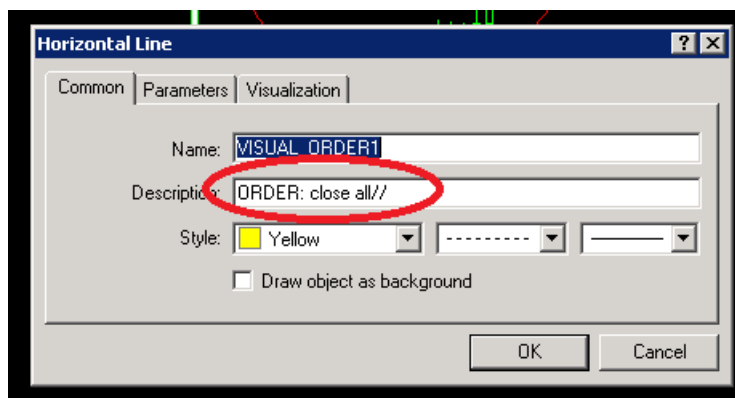
Keywords

"buy", "sell", "all", "open", "close" in any language layout and any phrase

After successful execution of the trading command, the color of the order line becomes gray (inactive).

Important

After the command has been recorded (in description box), put two backslashes "/" at the end of the string, this will symbolize that the command is ready for execution, otherwise the Advisor will consider the phrase unfinished (in edit mode) and highlight the line with inactive color.



The Advisor works only with its own orders, if **MagicNumber** variable is not equal to 0, or with all orders if **MagicNumber** equals 0.

For more examples please check the video which you can find in the same folder with this manual.

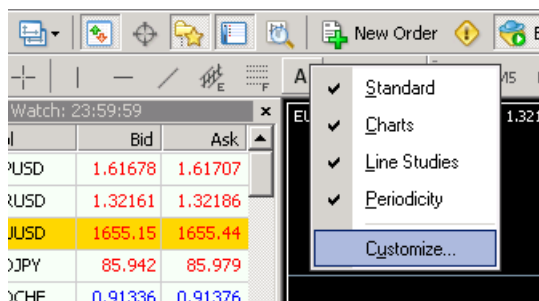
Trading Zones

Also the Advisor enables work with trading zones more clearly. The standard MT4 terminal has a function of putting a rectangle to the chart for highlighting the trading zone. Our Advisor makes this trading zone a "beam", i.e. its right border will follow the right movement of the price chart with each new candle. This gives more comfort to the user when drawing important areas of support and resistance.

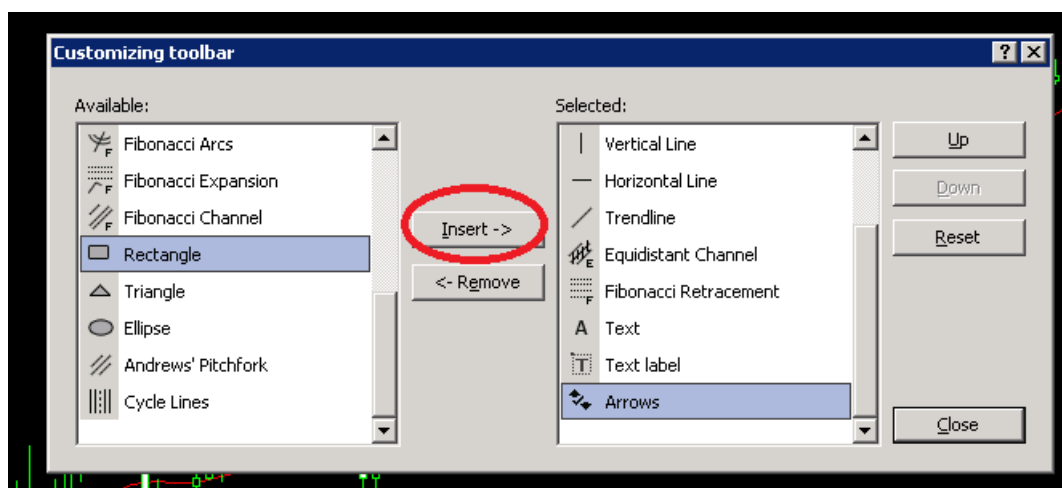
To do this, you shall follow these steps:

By default, the standard instruments MT4 do not include Rectangle. Therefore it should be added.

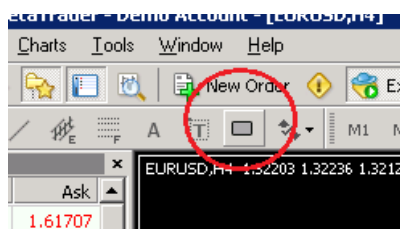
To do this, right-click on the toolbar and select "Customize" from the menu.



Customizing Toolbar will appear. Scroll down the left box, and find Rectangle. Select it and click Insert.



Then close the window, and Rectangle tool will be added to the toolbar.

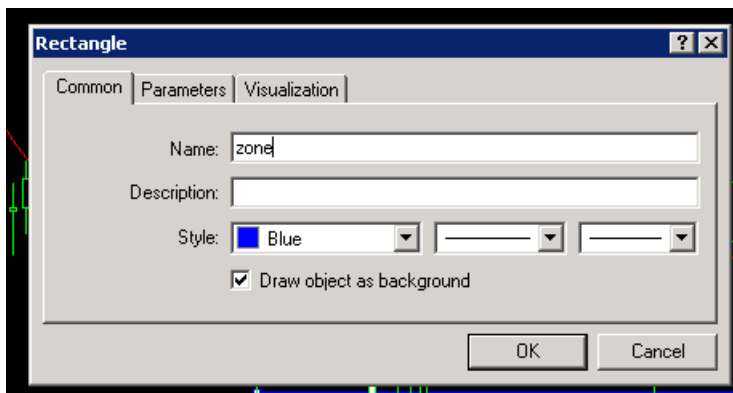


This is how standard Rectangle looks like



It is very convenient for selecting S/R zones. But we need the rectangle to follow the price.

Create a rectangle, go to its properties, and rename it to "zone", after this the Adviser will see it, rename it as the active trading zone with the designation of extreme levels and run it.



then click ok and you're done.



Troubleshooting

The expert advisor is not working

First of all, please make sure that all installation steps from the manual were performed correctly. If you did not locate any errors in the installation process, have a look under the “Experts” and “Journal” tabs in the “Terminal” window of your Meta Trader 4 to identify your problem.

DLL calls are not allowed

Please, make sure that under the Tools->Options->Expert advisors tab of your Meta Trader 4 platform, the “Allow DLL Imports” box is checked. If not, check it, confirm the changes, and reattach your robot to the chart. Also, make sure that “Allow Live Trading” is checked and “Confirm DLL Function Calls” is unchecked, as these settings are also crucial for your robot’s trading.

Authentication Failed: Wrong license

Please, make sure that you have entered your license number correctly – if not, click the smiley face icon or press F7 to open the “Inputs” tab and enter the code again.

Other problems

If you are experiencing any issues that are not covered in the user’s manual, please send your message to the support team at support@binarycashbot.com, providing as much detail as possible. Any screenshots or additional information will be appreciated.